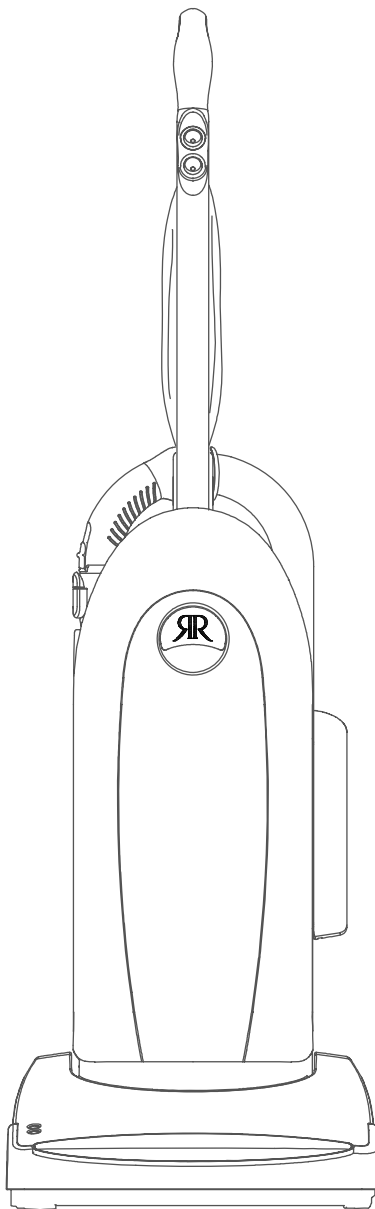
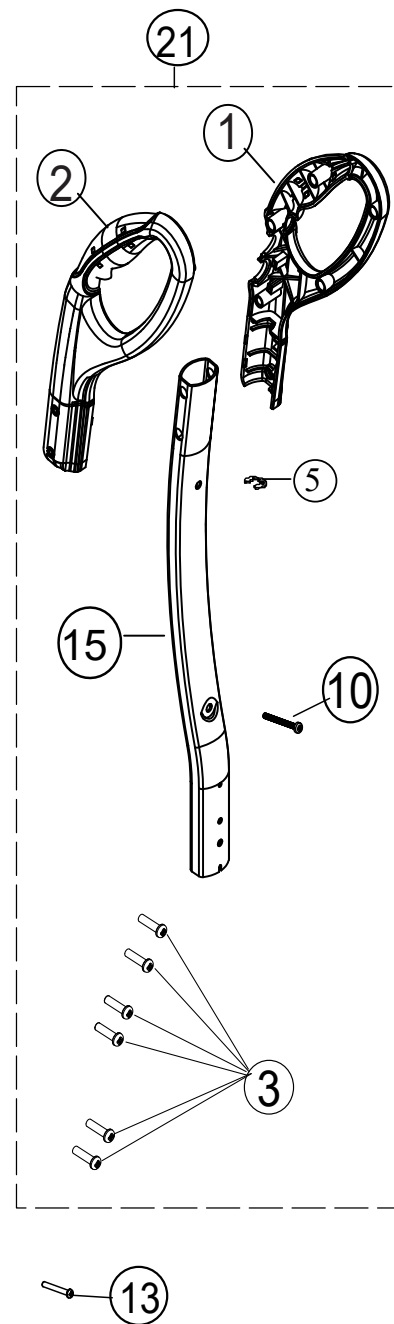
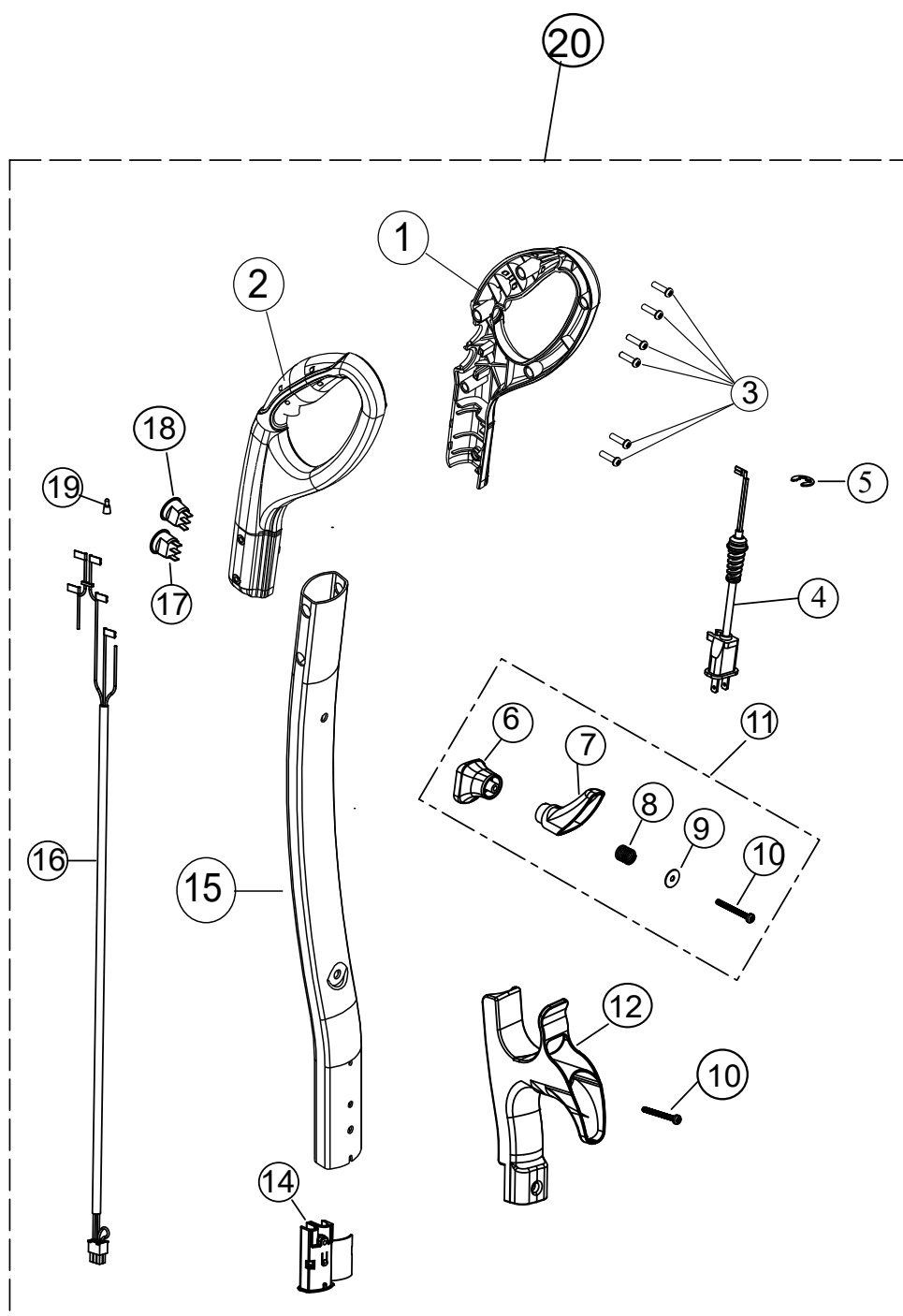


RICCAR

PARTS BOOK

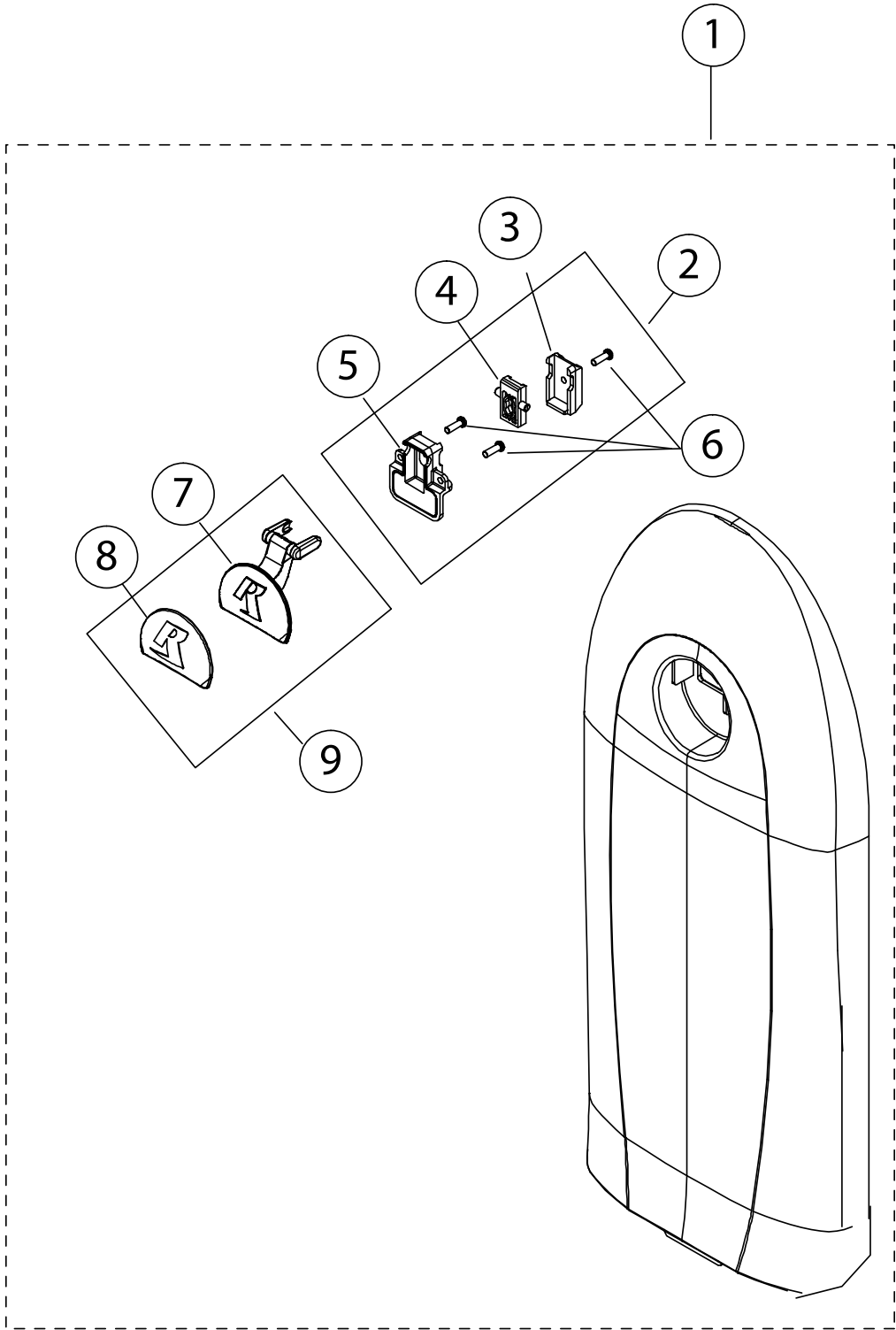
RADIANCE MODEL ALL VERSIONS
RAD RADP





HANDLE ASSEMBLY**Riccar Model RAD RADP All Versions**

KEY	PART NUMBER	DESCRIPTION
1	B484-0214B	Handle Grip Righ
2	B484-0414B	Handle Grip Left
3	A732-8314	Screw #8 x 5/8"
4	D333-0100	Power Cord Assembly 35ft.
5	A732-2400	E-clip , 11mm
6	B384-0800	Upper Cord Hook Base
7	B384-0900	Upper Cord Hook
8	B430-0200	Spring
9	A430-0405	Washer
10	A732-1500C	Screw M4 X 45
11	D384-1100	Upper Cord Hook Assembly
12	B355-3914	Lower Cord Hook
13	A732-3400	Handle Mount Screw
	D384-2300	Retro Handle Mount Kit (SN 7B & earlier)
14	384-1400D	Handle Tube Base Connector
15	B384-3000C	Handle Tube
16	B333-2200B	Handle to Body Harness
17	A328-1300	Switch Carpet/Floor
18	A328-1200	Switch On/Off
19	B123-0100	Wire Connector Md.
20	D384-3000	Handle Assembly Complete
21	D384-1300	Heavy Duty Handle Kit For Replacement



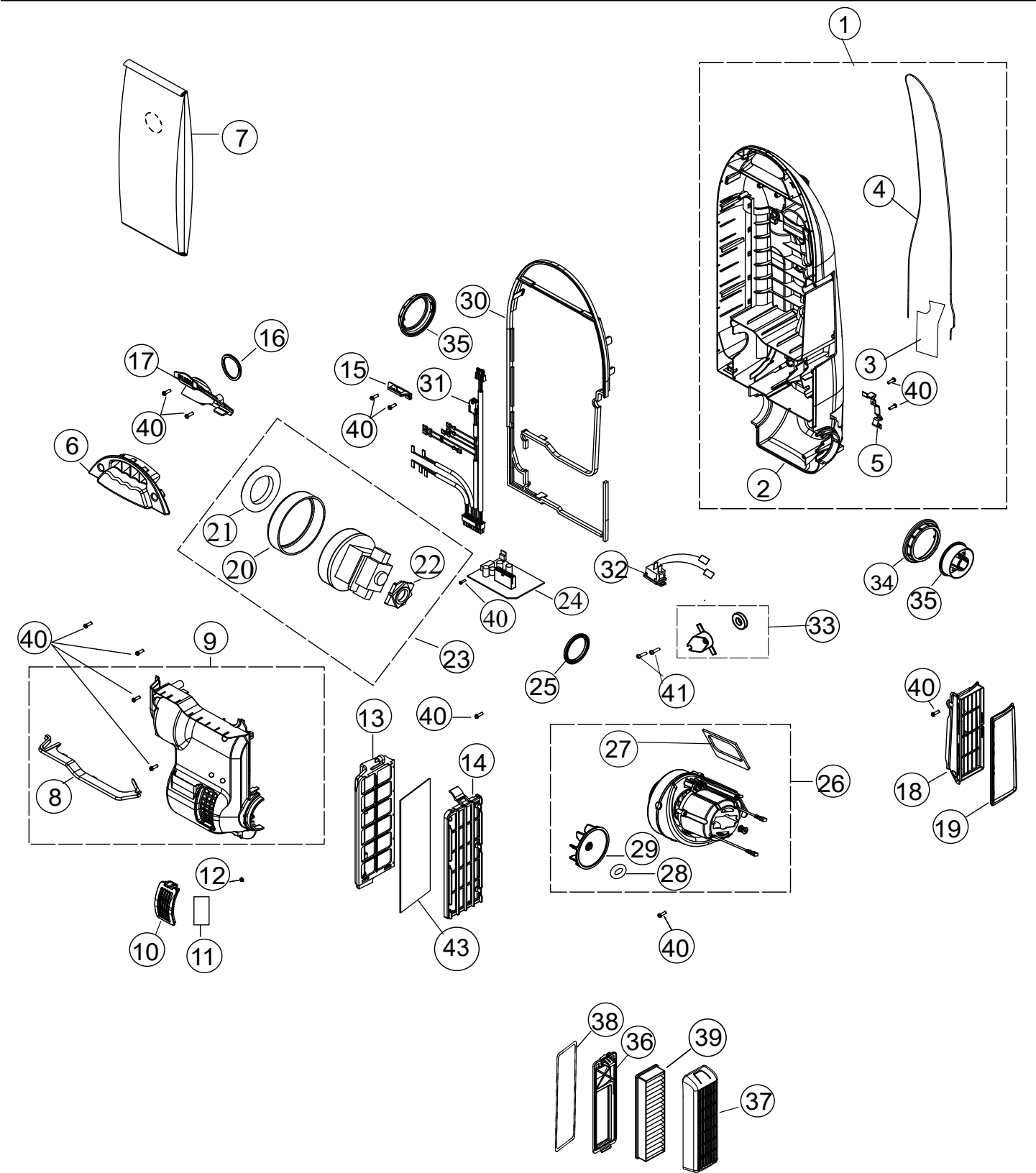
DUST COVER

Riccar Model RAD RADP All Versions

KEY	PART NUMBER	DESCRIPTION
1	Not Available	Dust Cover Assembly Red (RAD)
	Not Available	Dust Cover Assembly Gold White (RADP)
	D380-0714	Dust Cover Assembly Replacement Black (All Versions)
2	D380-4000	Dust Cover Latch Body Assembly
3	B380-0514B	Dust Cover Latch Body
4	B380-0914B	Dust Cover Latch
5	B380-2114	Latch Cover
6	A732-8414	Screw HI LO #8X7/16
7	B380-0414B	Dust Cover Lever
8	A380-1000B	Dust Cover Lever Badge
9	D380-3000	Dust Cover Lever Assembly

MAIN BODY (FRONT)

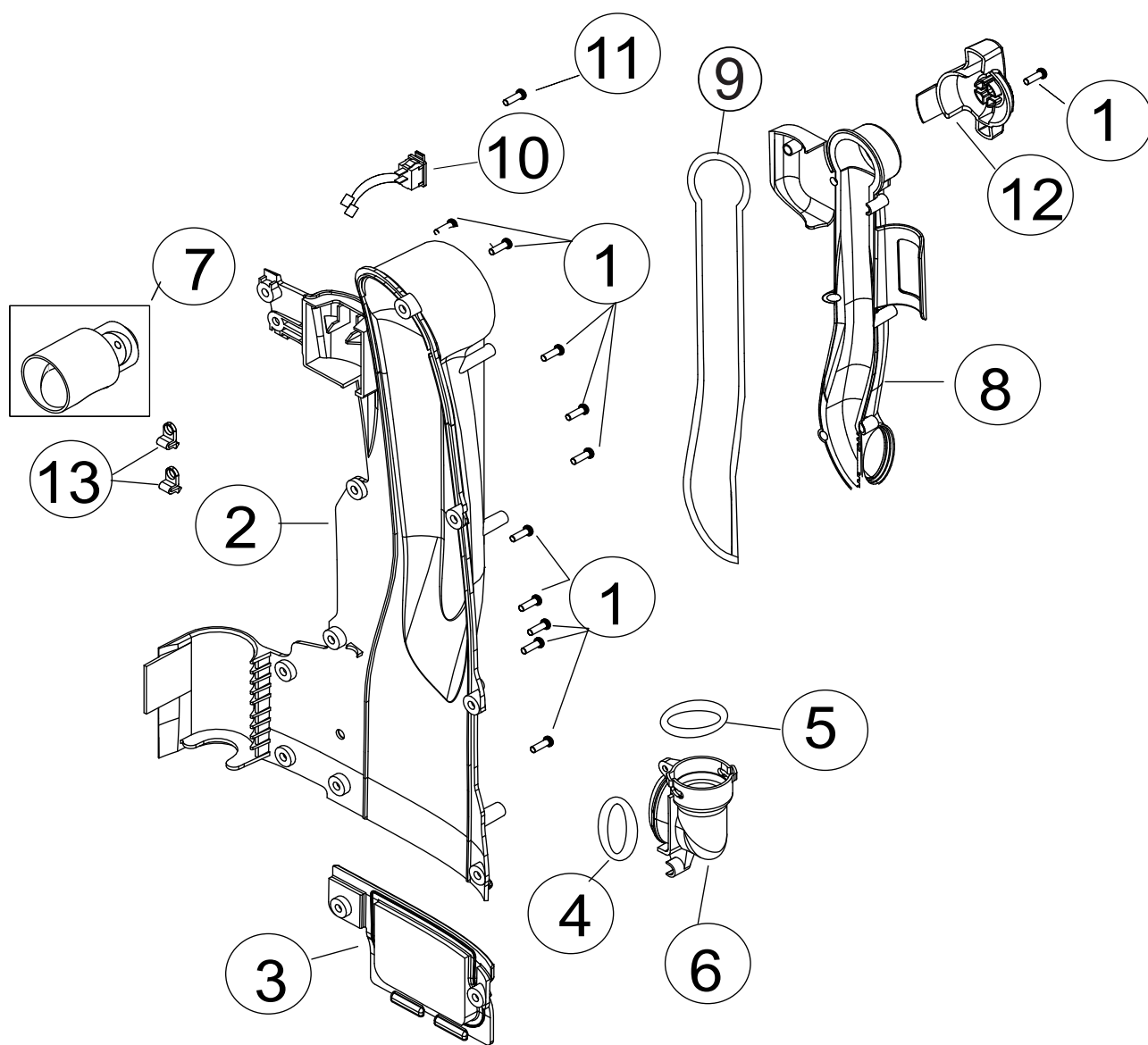
Riccar Model RAD RADP All Versions



KEY	PART NUMBER	DESCRIPTION
Not Shown	RF9G-1	Filter Set HEPA Granulated Charcoal Motor [Filters #11,39 &14] (Rad)
Not Shown	RF9UG-1	Filter Set HEPA Plus Granulated Charcoal Motor [Filters #39,40 &14] (RADP){longer #36 base & #37 cover required for HEPA Filter}

MAIN BODY (FRONT)**Riccar Model RAD RADP All Versions**

KEY	PART NUMBER	DESCRIPTION	KEY	PART NUMBER	DESCRIPTION
1	D380-1200	Dust Compartment Assembly w/Seals Rad.5+ and Above All RADP	26	D386-2200	Direct Air Motor Assembly RAD.5 and below
2	Not Available	Dust Compartment Rad.5 and Below		D386-2400	Direct Air Motor Assembly RAD.5+ and later All RADP
	B380-0214F	Dust Compartment Rad.5+ and Above All RADP	27	B388-4300B	DAM Outlet Seal
3	B388-3714	Wire Inlet Seal	28	A732-9305	Fan Washer
4	B388-0300D	Airpath Back Cover Seal	29	B386-1700	Direct Air Cleaning Fan
5	B380-2400	Tilt Lock Body Plate	30	B388-0114B	Primary Dust Compartment Seal
6	B380-1414	Carrying Handle	31	Not Available	Internal Wire Harness RAD.6 and below
7	RXH-6	HEPA Bag (6 Pack)		B333-2800C	Internal Wire Harness RAD.7 and Above All RADP
	B211-5900	HEPA Bag Bulk	32	A328-1000	Winged Rocker Switch
8	B388-0214B	Motor Cover Seal	33	D328-1100	Thermal Reset Switch Assy
9	D380-1114	Motor Cover w/Seals	34	B370-3100	Pivot Bushing - Casting
10	B380-1214	Direct Air Filter Cover	35	B370-3414	Inner Wire Guide
11	Not Available	Direct Air Motor Filter (See Filter Sets RF9G-1 Or RF9UG-1 For Replacement)	36	B388-1714B	Pleated Post Filter Base Standard (RAD)
12	A123-0114	Adjustment Hole Plug f/Circuit Board		B388-2114C	HEPA Post Filter Base Long (RADP)
13	B380-1014	Internal Air Path	37	B388-3014	Pleated Post Filter Cover Printed Standard (RAD)
14	B388-4814	Secondary Filter Frame (Used with #43)		B388-3300	HEPA Plus Post Filter Cover Printed Long (RADP)
	C388-4800	Secondary Granulated Charcoal Filter Assembly (RAD RADP)	38	B388-3500	Post Filter Base Seal
15	B380-2200	Dust Cover Catch	39	B388-1965B	HEPA Post Filter Electrostatic(RAD)
16	B388-0414B	Bag Mount Seal		B388-2365C	HEPA Plus Filter [longer #37 base & #38 cover required](RADP)
17	B380-1514	Bag Mount	40	A732-8314	Screw #8 x 5/8"
18	B388-1314B	Post Filter Mount	41	A732-8414	Screw HI LO #8X7/16
19	B388-1514B	Post Filter Sea	43	B388-0800B	Secondary Charcoal Filter (Used with #14 Secondary Filter Frame)
20	B388-5200	Clean Air Rear Strip Seal			
21	B388-5600B	Clean Air Rear Ring Seal	Not Shown	Not Available	Pleated Post Filter Base Assembly (RAD)
22	B386-2400	Clean Air Motor Mount Front		D380-0114	Dust Compartment Upgrade Kit RAD.5 and Below
23	D386-2500	Clean Air Motor Assembly			
24	Not Available	Main PCB With Memory Rad.6 and Below			
	B318-1401K	Main PCB With Memory Rad.7 and Above All RADP			
25	B388-1014B	Direct Air Motor Inlet Seal			



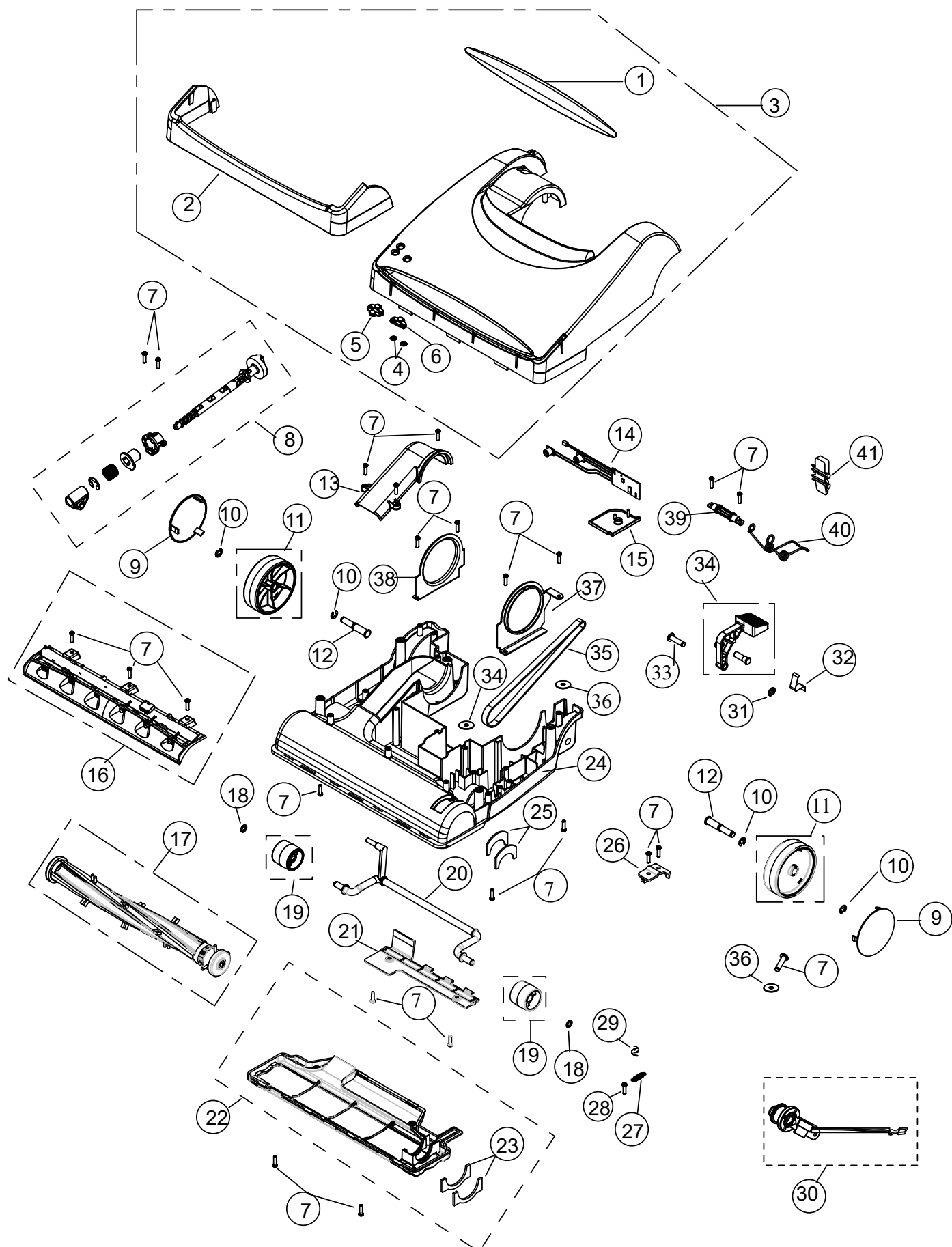
BACK COVER

Riccar Model RAD RADP All Versions

KEY	PART NUMBER	DESCRIPTION
1	A732-8314	Screw Phillips Hi Lo #8 x 5/8
2	Not Available	Back Cover RAD.5 and Below
	B380-2614	Back Cover RAD.5+ and Above All RADP
3	D380-2714	Clean Out Door w/Seal Rad.5+ and Above All RADP
4	B355-1100	O-Ring Hose Inlet Cuff Sea
5	B480-4700	O-Ring Hose Inlet Elbow Seal
6	B380-3214	Hose Inlet Elbow
7	D380-2914	Rotational Valve Assembly
8	B380-2814B	Hose Air Path Cover
9	B388-3600	Hose Air Path Cover Seal
10	A328-1400	Roto Valve Switch
11	A732-9005	Screw, #2 x 7/16"
12	B380-3014B	Rotational Valve Handle
13	B380-2014	Tool Clip

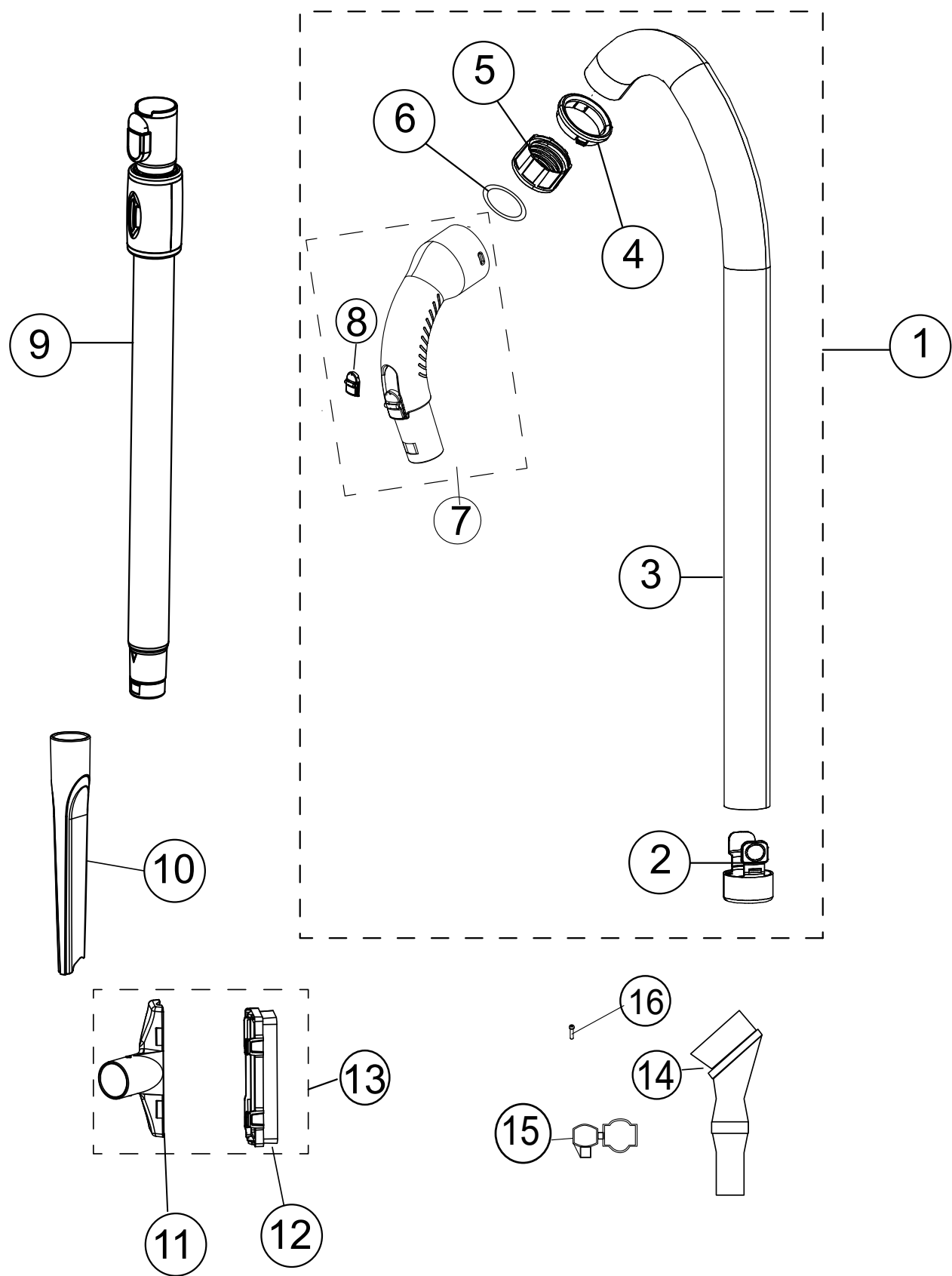
NOZZLE ASSEMBLY

Riccar Model RAD RADP All Versions



NOZZLE ASSEMBLY**Riccar Model RAD RADP All Versions**

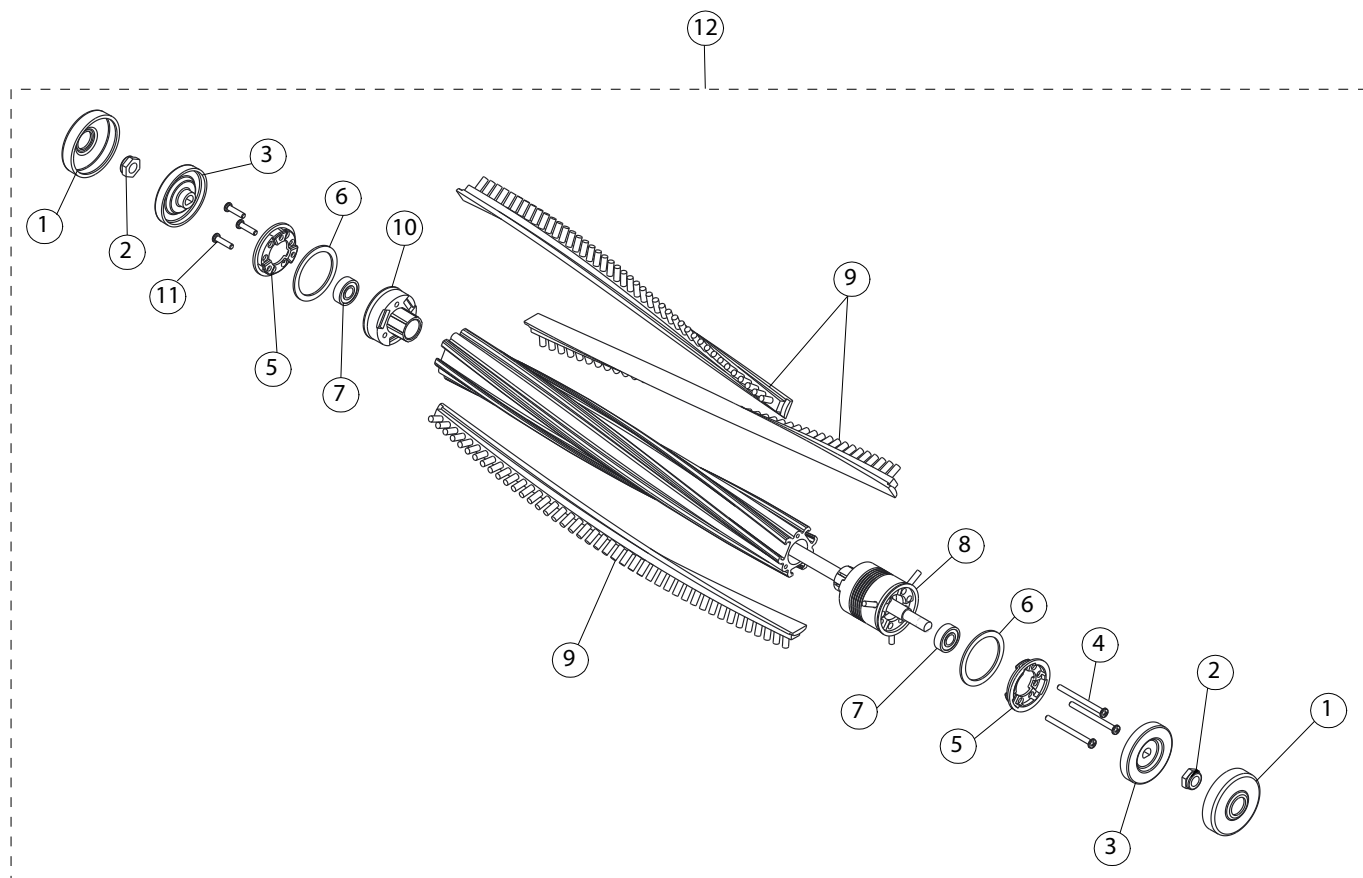
KEY	PART NUMBER	DESCRIPTION	KEY	PART NUMBER	DESCRIPTION
1	B370-0915	Lens	28	A732-4700	Grounding Screw
2	B370-1043	Nozzle Bumper	29	A732-3900	Washer
3	Not Available	Nozzle Assembly RICCAR RED (RAD) .7 and above	30	D475-0400	Idler Assembly w/Hall Sensor
	Not Available	Nozzle Assembly White Gold (RADP)	31	A732-3000	E-Clip .250"
	D370-0814	Nozzle Assembly Replacement Black	32	B370-3800	Tilt Lock Spring
4	A732-2700	Retaining Rin	33	B370-3600	Tilt Lock Pivot
5	B370-0615	Indicator Light Adjust Lens	34	C370-1400E	Tilt Lock Pedal Assembly
6	B370-4715	LED Lens Cover Filter check	35	A014-0100	Belt
7	A732-8314	Screw Hi Lo #8 x 5/8	36	B034-0100	Strain Relief Washer
8	D374-1100B	Height Adjust Assembly 6 Position	37	B370-3200	Pivot Bracket - Left
9	B370-4366B	Rear Wheel Hub Cap	38	B370-3300	Pivot Bracket - Right
10	A732-3100	E-Clip	39	B370-4114	Spring Assist Axle Shaft
11	C370-1200B	Large Overmolded Wheel Assembly	40	B370-4900B	Spring Assist Spring
12	B370-2900B	Axle-Rear Wheel	41	B370-4214C	Spring Assist Mount
13	B370-1514C	Nozzle Inlet Duct Cover			
14	C375-1600	Dirt Sensor (RADP)			
15	B370-4814	Base tray Dirt Sensor Cover (RADP)			
16	Not Available	Reflector/Headlight Assembly RAD.6 and below			
	D370-1900	Reflector/Headlight Assembly Rad.7+ and Above All RADP			
17	D375-2000	Agitator Assembly			
18	B350-4000B	Retaining Ring			
19	C370-1300	Small Overmolded Wheel Assembly			
20	B370-3000	Height Adjust Axle			
21	B374-0614	Height Adjust Axle Cover			
22	D370-1100C	Baseplate Assembly W/Seals			
23	B388-2500C	Bottom Agitator Seal			
24	B370-1414F	Nozzle Base Tray (RAD)			
	D370-1415	Nozzle Basetray for Dirt Sensor (RADP)			
25	B388-2400C	Top Agitator Seal			
26	B375-0214	Idler Arm Cover			
27	B375-0300B	Idler Arm Spring			



ACCESSORIES

Riccar Model RAD RADP All Versions

KEY	PART NUMBER	DESCRIPTION
1	D355-1500	Hose/Handle Assembly RAD.5 and below
	D355-1000C	Hose/Handle Assembly RAD.5+ and later All RADP
2	B455-0214B	Hose Inlet Cuff
3	B355-0714B	6-1 Stretch Hose
4	B355-0214C	Hose Handle Lock Ring
5	B355-0314B	Wand Handle Swivel Cuff
6	B388-2700	Wand Cuff Seal
7	C355-0814B	Hose Handle Assembly
8	C355-0914	Hose Handle Bleed Valve Slide Assy
9	C626-2500	Wand Assembly
10	B355-2014	Crevice Tool
11	C355-1214	Upholstery Tool
12	C355-1314B	Dusting Brush Natural Bristles
13	C355-1100	Dusting Brush/ Upholstery Tool Assembly
14	C351-1014	Multi Purpose 3 in 1 Tool
15	B351-3514	3 N 1 Tool Holder
16	A732-5300	Combination Head Screw (Used To Install #15)



KEY	PART NUMBER	DESCRIPTION
1	B375-3700	Agitator End Cap Cover
2	A375-0100	Locking Hex Nut
3	B375-3600	Agitator End Cap
4	Not Available	Long Screw
5	Not Available	Agitator Felt Retainer
6	B375-3900	Felt Seal
7	A375-0200	Bearing
8	B375-3400	Pulley Clamping Design
9	B375-4000	Gold Nylon Brush Strip (Standard)
	B375-4300	White Brush Strip (Softer)
	B375-4200	Natural Brush Strip (Softest)
10	B375-3500	Bearing Cartridge
11	Not Available	Short Screw
12	D375-2000	Agitator Assembly

NOTE: The parts listed above only fit the clamping agitator. Components for the non-clamping agitator are no longer available. Non-clamping agitators in need of service will need to be replaced with the clamping version. Please refer to the bulletin on the next page for details.

PRODUCT IMPROVEMENT BULLETIN

Radiance Clamped Agitator

Date Issued: 03-08-2013

Parts Affected: D375-1000F (Old), D375-2000 (New)

Models Affected: See table

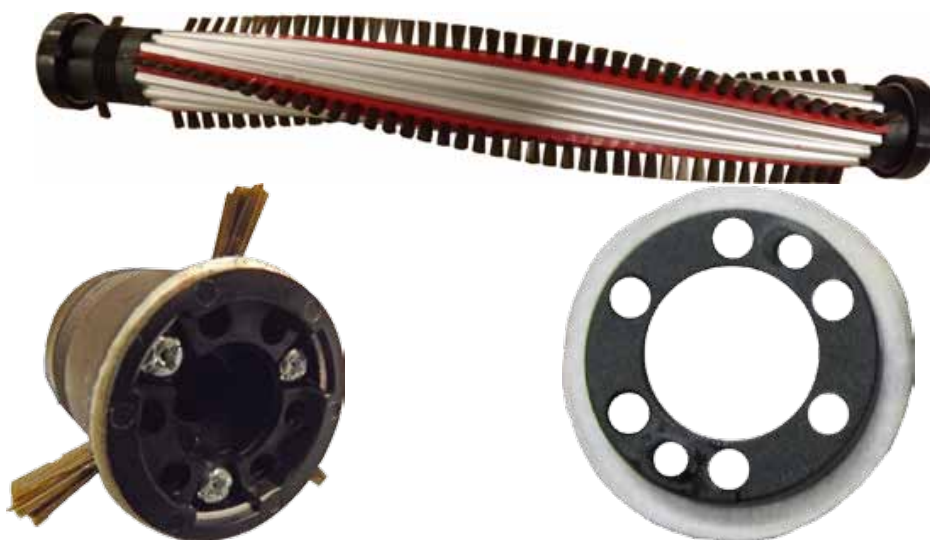
Model	Serial Number
RAD.10	0113031313
RADP.4	0113006458

Reason for the Improvement: There have been some reports from the field of excessive noise and vibration as well as agitator failure due to a buildup of hair inside the bearing pocket.

Description of Changes:

- 1) The ends are now clamped to the aluminum core on each side using three screws in addition to the nut. This change reduces vibration and noise.
- 2) Felt end seals have been added to create a barrier under the end caps which will prevent hair from getting into the bearings. The bearings have also been moved deeper into the bearing pocket.
- 3) Due to changes in the dimensions of the parts the clamped agitator has different brush strip lengths than the previous agitator. When replacing the brush strips be sure to use the correct brush strip for the agitator.

***PLEASE NOTE:** The agitators will initially have more spin resistance when turned by hand. This is due to the new end seals and the resistance will be greatly reduced after they wear in (about 30 minutes of operation.)



Please direct questions to Tacony Technical Service 800-643-7459